

2. Incrementally improve glycemic control, diabetes outcomes and DRE rate.

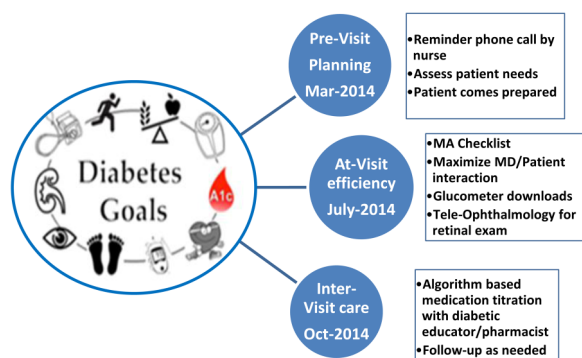


Figure 1 Comprehensive Care Model: Phases and Timeline.

	Diabetes Registry *	A1C \geq 9% Cohort (Intervention Patients)	A1C < 9% Usual care
# Unique patients (Dec 2013)	1704	246 (14%)	1458 (86%)
Female	54 %	54%	54%
<40	7%	16%	5%
40-64	56%	63%	55%
> 65	37%	21%	40%
< 65	63 %	79 %	60 %
Black/African American	39%	52 %	36%
White	57 %	46%	59%
Mean A1C (Dec 2013)	7.5 ((\pm 1.7)	10.8 ((\pm 1.7)	6.9 ((\pm 0.9)
Mean A1C (June 2015)	7.4 ((\pm 1.7)	9.5 ((\pm 1.9)	7.1 (\pm 1.35)

* Patients with documented A1C in 2013

Figure 2 Patient characteristics.

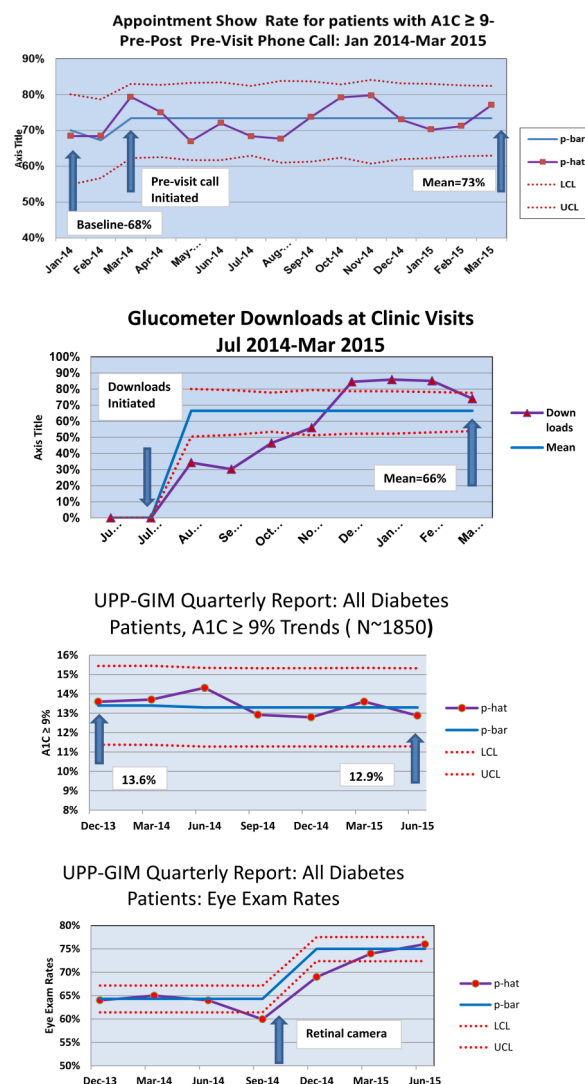


Figure 3 Control Charts showing results of Pre-Visit planning (PVP), Glucometer downloads (At-Visit), Trend of A1C $\geq 9\%$, and eye exam rates in our diabetes population.

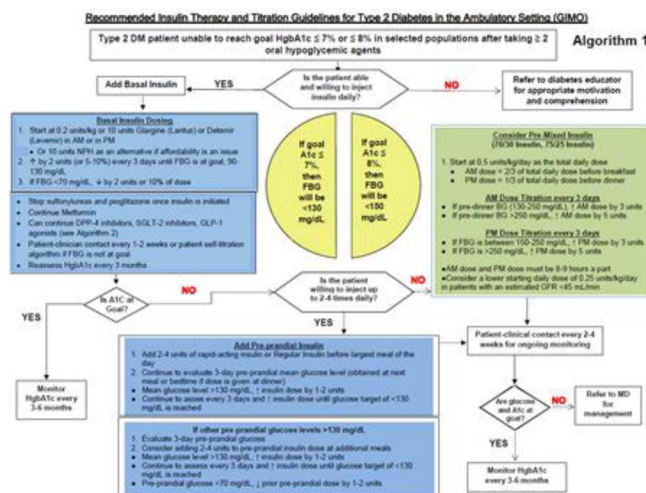


Figure 4 Insulin Titration Algorithm used by Diabetic educators for inter-visit care.

Methods In January 2014, a multi-disciplinary diabetes team was created to redesign care. A comprehensive care model was established and implemented in phases. All clinic staff and physicians participated. It included engaging patients with a pre-visit phone call, improving at-visit efficiency to maximize addressing all patient needs, including downloading and printing glucose meter reports and adding tele-ophthalmology, and intensifying inter-visit care with algorithm-based medication titration. (see figure)

Processes and outcomes were tracked over 18 months. Control charts were used to evaluate processes and outcome measures as phases were implemented and quarterly reports for outcomes.

Results Mean A1C in the cohort of patients starting with A1C=9% (n=246) improved from 10.8 (± 1.7) to 9.5 (± 1.9). Appointment show rate improved from 68% to 73%. Encounters with diabetic educators rose from 20% to 54%. Meter download compliance reached almost 90% and DRE rates improved from 64% to 76%.

Conclusions Engaging uncontrolled diabetic patients before, during, and after visits with a team-based approach and novel day-of-visit efficiencies improved glycemic control and eye exam rates. Continued monitoring is needed to ensure the durability of these gains.