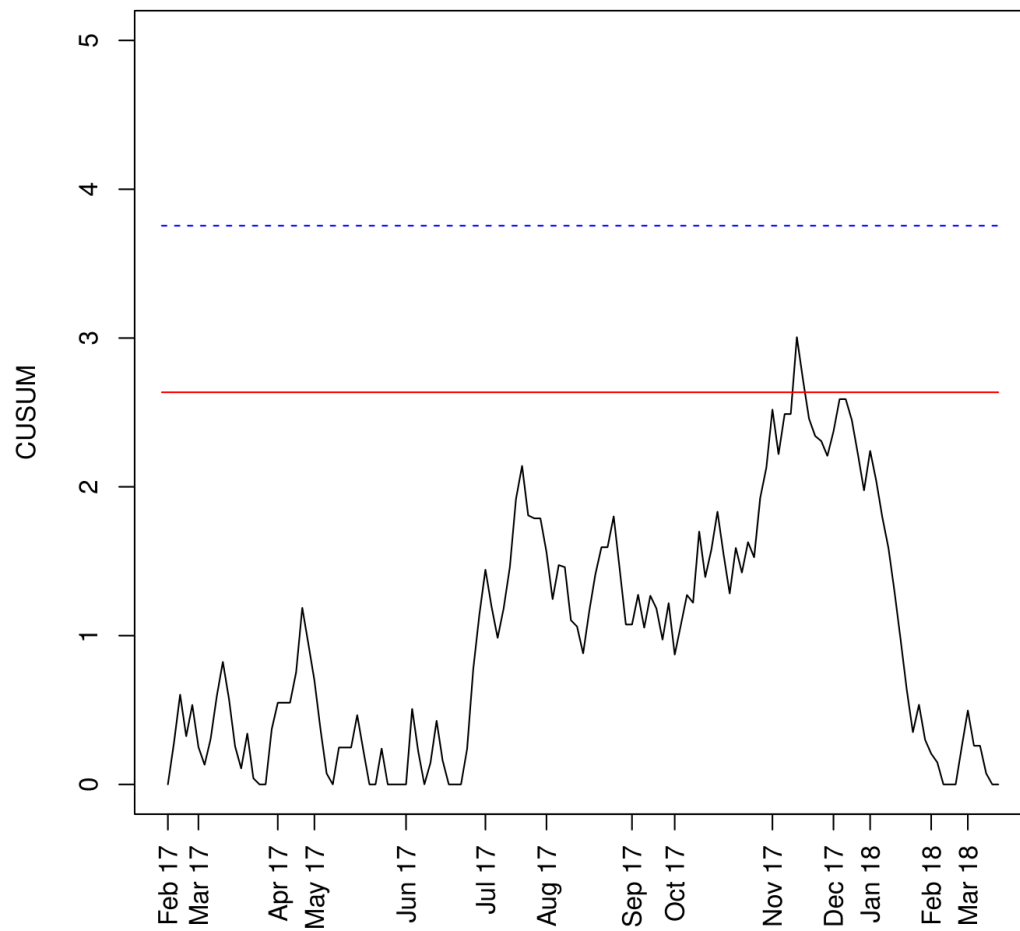


**SUPPLEMENTAL MATERIAL 3**

**Patient outcome measures:** Risk-adjusted cumulative sum and variable life adjusted display charts for the different patient outcome measures.

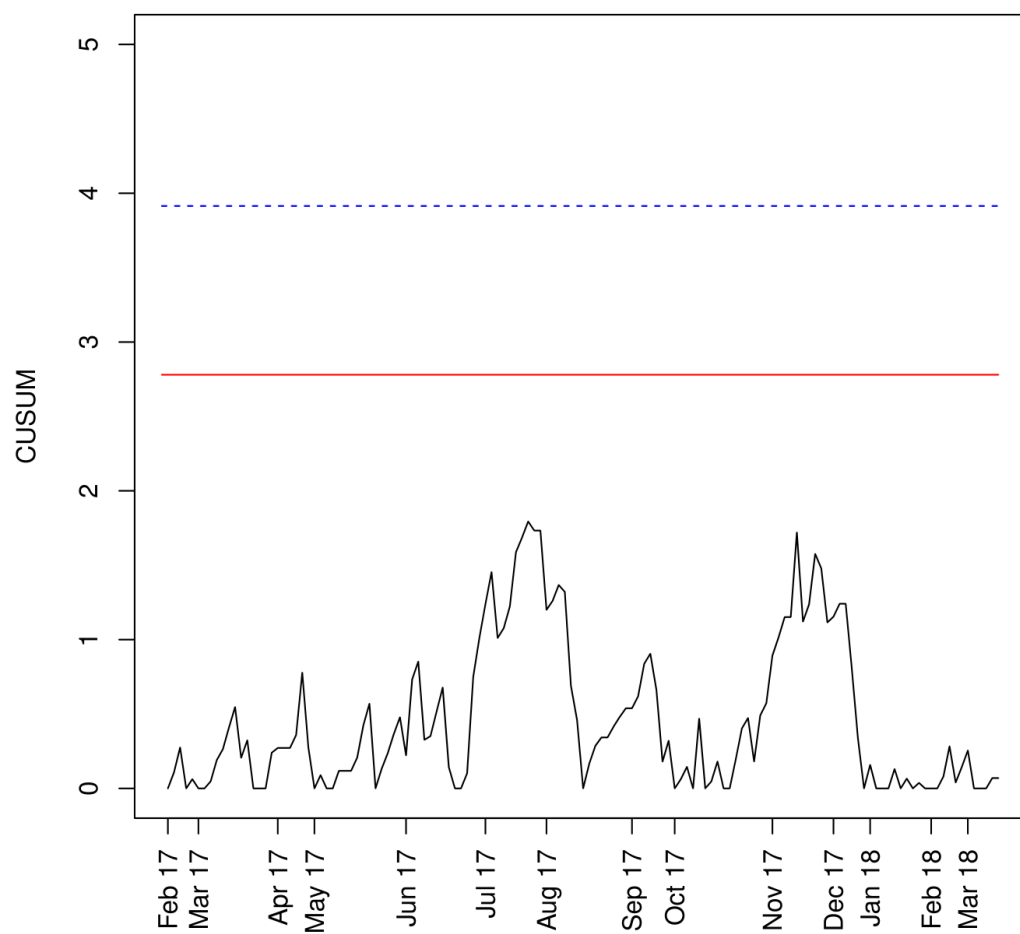
**Chart A:** Patient outcome measures - No symptoms: Risk-adjusted cumulative sum chart for patients with no symptoms reported 90 days post-stroke. Higher values represent improvement (larger proportion of patients reporting no symptoms). Red line = Upper control limit, Blue dashed line = Upper control limit accounting for estimation error



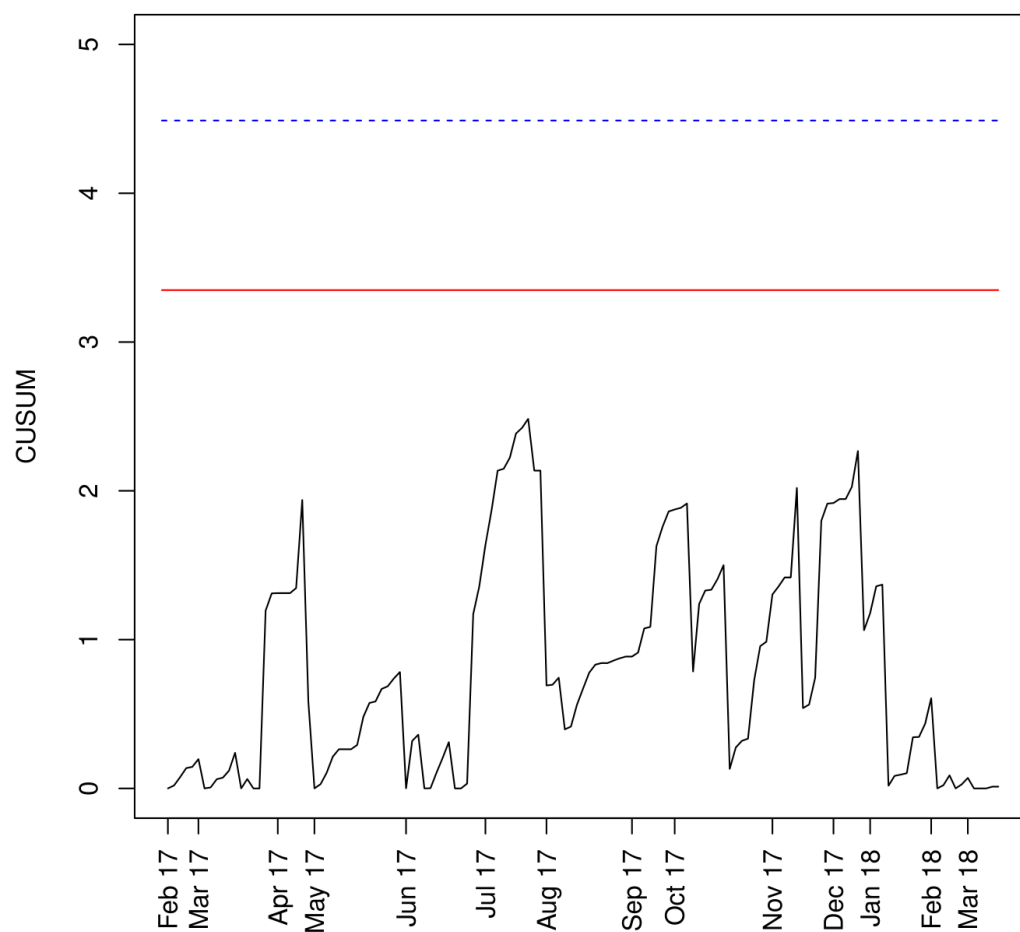
**Chart B:** Patient outcome measures - No symptoms: Risk-adjusted variable life adjusted display chart showing the excess number of patients reporting no symptoms 90 days post-stroke compared to if baseline performance was continued.



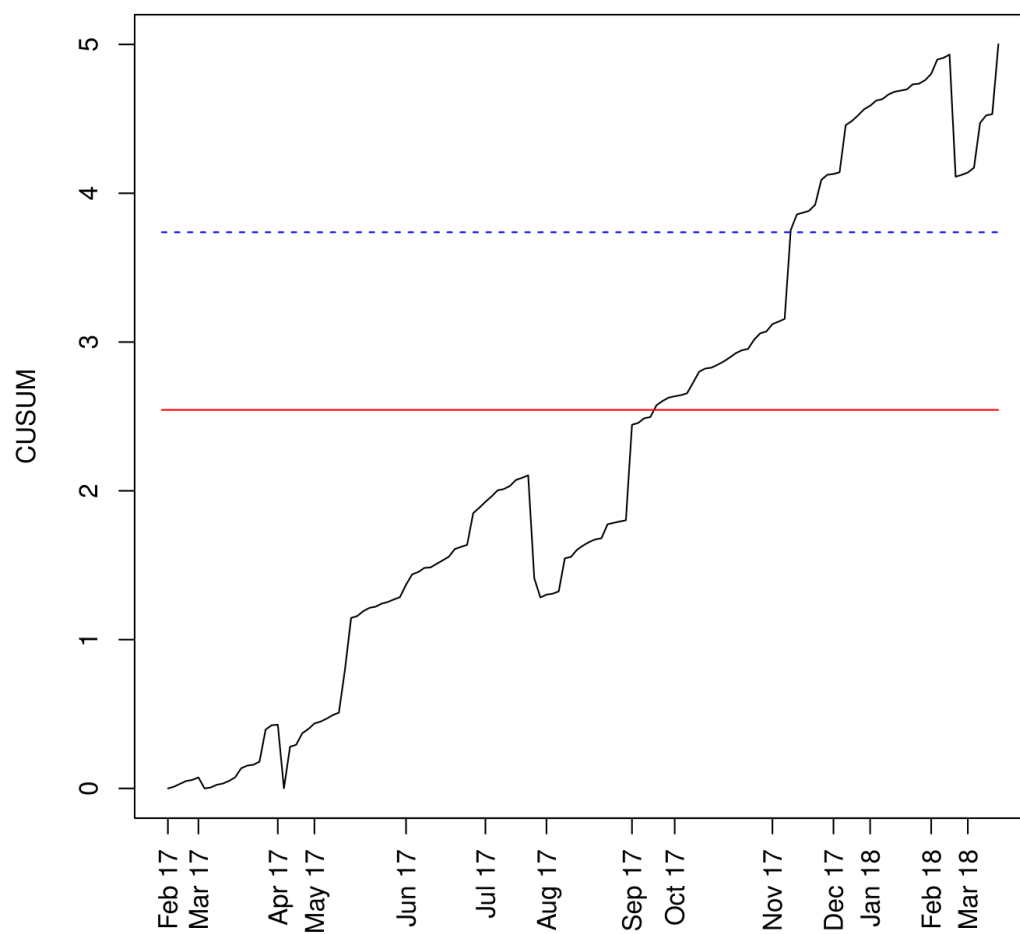
**Chart C:** Patient outcome measures - “Excellent outcome”: Risk-adjusted cumulative sum chart for patients with a modified Rankin scale score of 0-1, 90 days post-stroke. Higher values represent improvement (larger proportion of patients reporting less symptoms). Red line = Upper control limit, Blue dashed line = Upper control limit accounting for estimation error



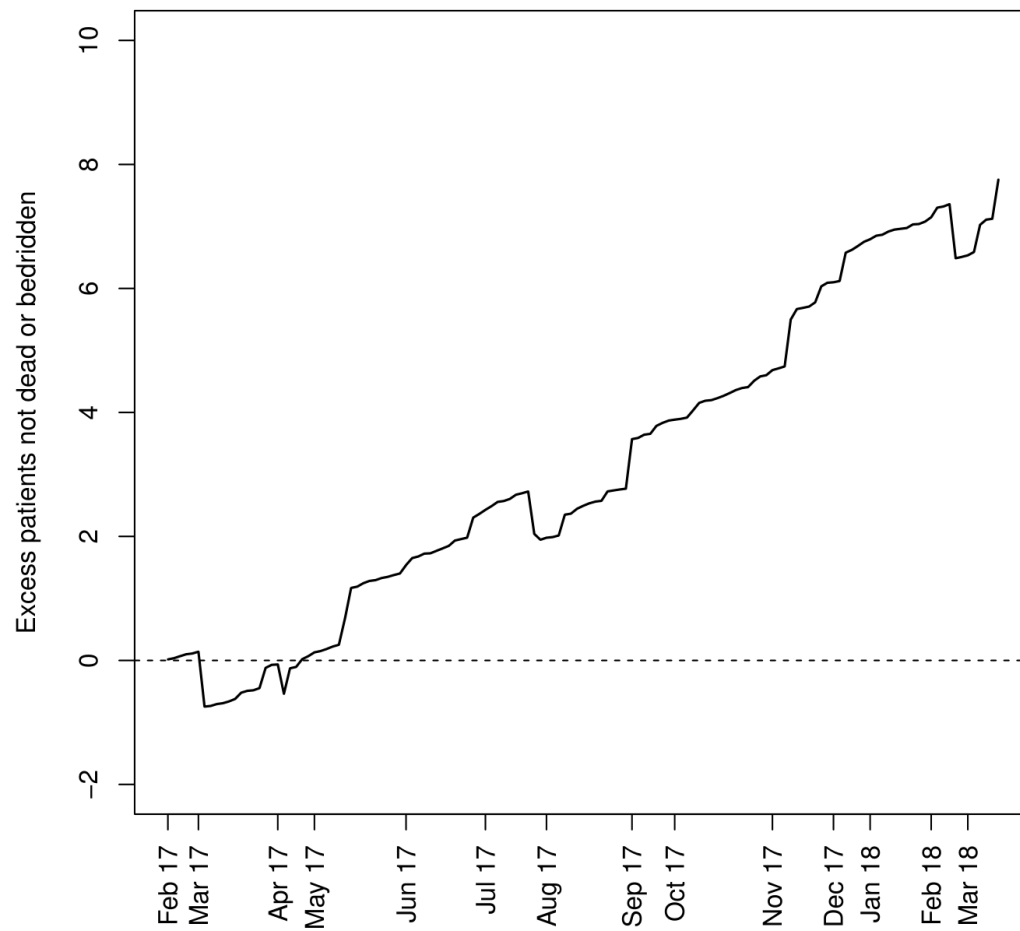
**Chart D:** Patient outcome measures - “Good outcome”: Risk-adjusted cumulative sum chart for patients with a modified Rankin scale score of 0-2, 90 days post-stroke. Higher values represent improvement (larger proportion of patients reporting having less symptoms post-intervention). Red line = Upper control limit, Blue dashed line = Upper control limit accounting for estimation error



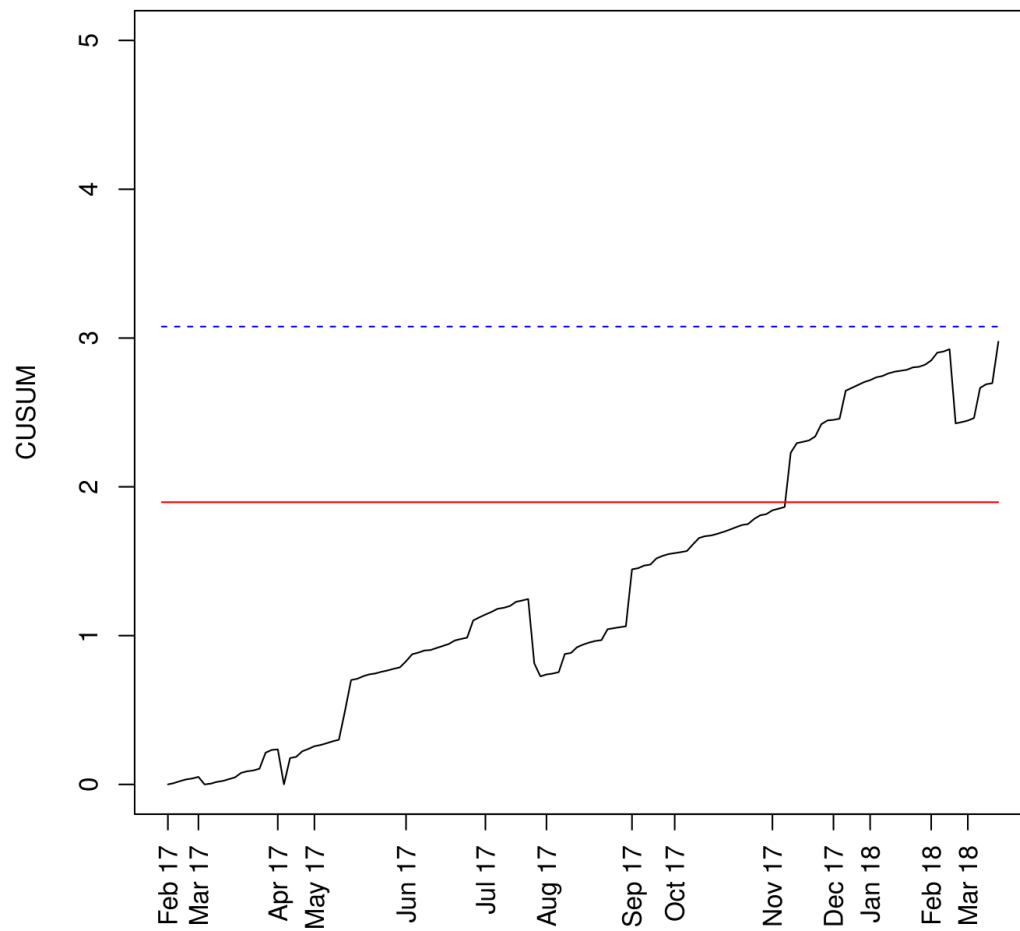
**Chart E:** Patient outcome measures - “Worst” outcome: Risk-adjusted cumulative sum chart for patients with a modified Rankin scale score of 0-4, 90 days post-stroke. Higher values represent improvement (larger proportion of patients not registered as either dead or bedridden). Red line = Upper control limit, Blue dashed line = Upper control limit accounting for estimation error



**Chart F:** Patient outcome measures - “Worst” outcome: Risk-adjusted variable life adjusted display chart showing the excess number of patients having a functional outcome that is better than modified Rankin Scale score 5-6 (bedridden or dead) 90 days post-stroke, compared to if baseline performance was continued.



**Chart G:** Patient outcome measures – All-cause-mortality: Risk-adjusted cumulative sum chart for patients who were registered as dead (any cause) 90 days post-stroke. Higher values represent improvement (larger proportion of patients alive after 90 days). Red line = Upper control limit, Blue dashed line = Upper control limit accounting for estimation error





**Chart H:** Patient outcome measures – All-cause-mortality: Risk-adjusted variable life adjusted display chart showing the excess number of patients that survived 90 days post-stroke compared to if baseline performance (from pre-intervention) was continued.

