

Hospital anonymised

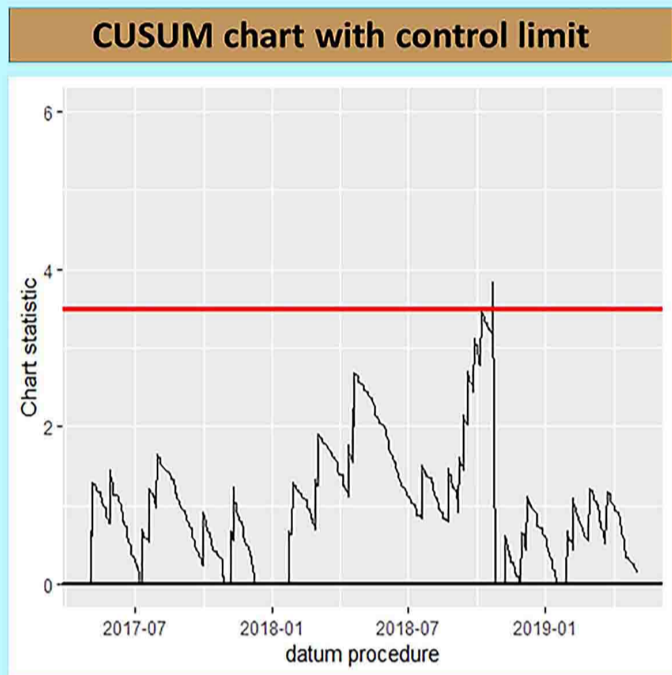
blinded

Blinded

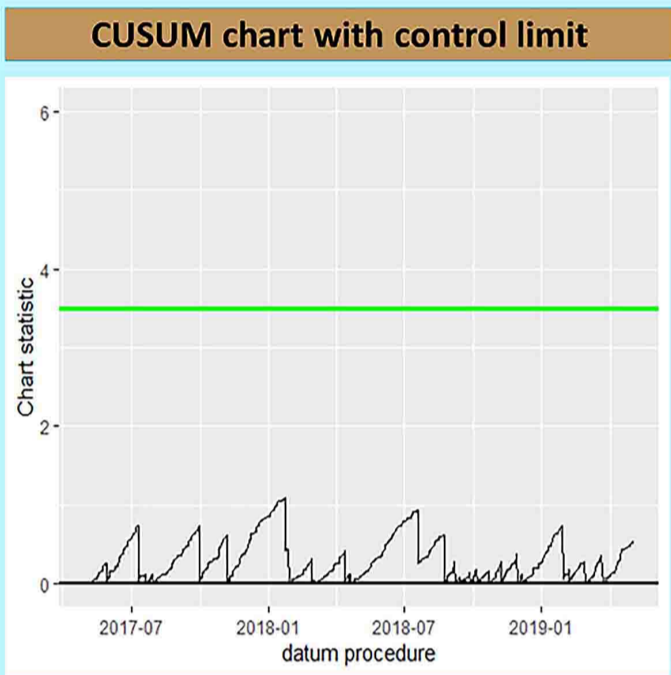
Monthly Feedback

Primary Total Hip Arthroplasty

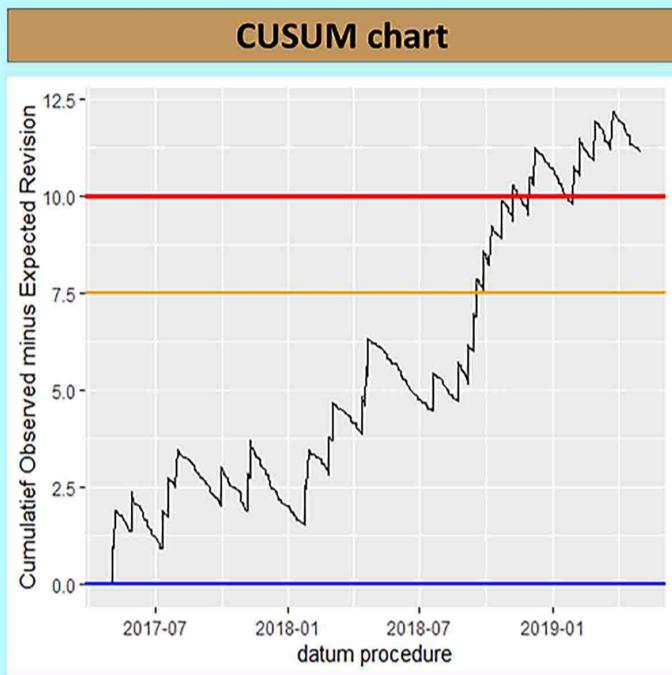
Revision within 1 year adjusted for case-mix. Data from the last 12 months were excluded for follow-up.



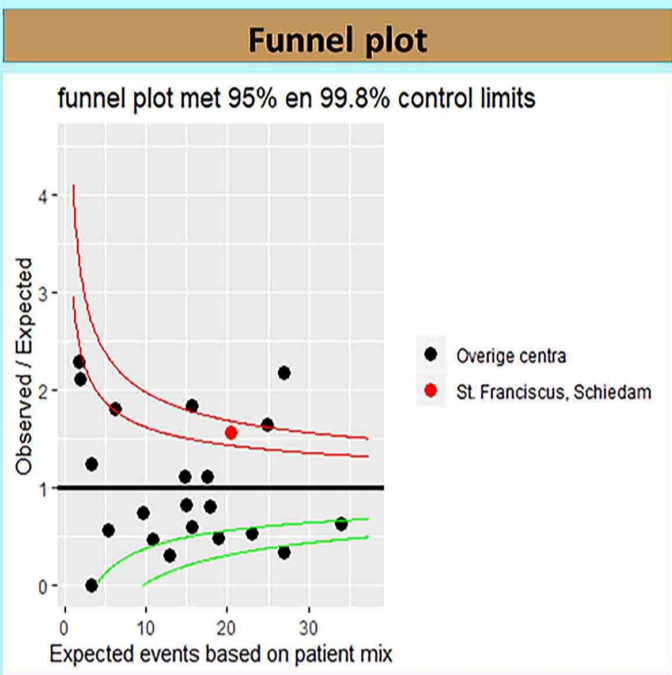
In this graph, the operations are arranged by operation date (x-axis). In an **upward trend**, your center has **more revisions than expected**. When the **black line** crosses the **red line**, your center performs with **95% confidence twice as many revisions as expected based on patient characteristics**, calculated in the total [redacted] study group. After crossing the red line, the black line is reset to 0.



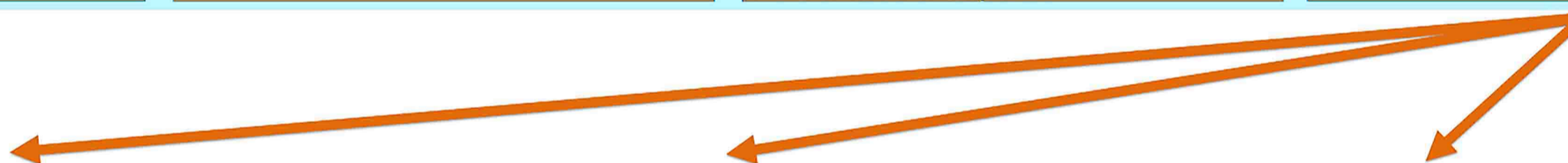
In this graph, the operations are arranged by operation date (x-axis). In an **upward trend**, our center has **less revisions than expected**. When the **black line** crosses the **green line**, your center performs with **95% confidence half the number of revisions than expected based on patient characteristics**, calculated in the total [redacted] group. If you go through the green line, the black line is reset to 0.



In this graph, the operations are arranged by operation date (x-axis). On the y axis the cumulative number of observed minus expected revisions is shown. If a revision has taken place, the black line rises vertically and becomes stronger the smaller the expected probability. Without revision, the line goes downward. **On the y-axis you can see how many revisions your hospital has performed more or less than expected.**

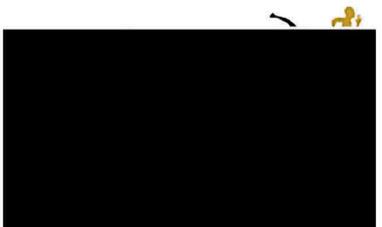
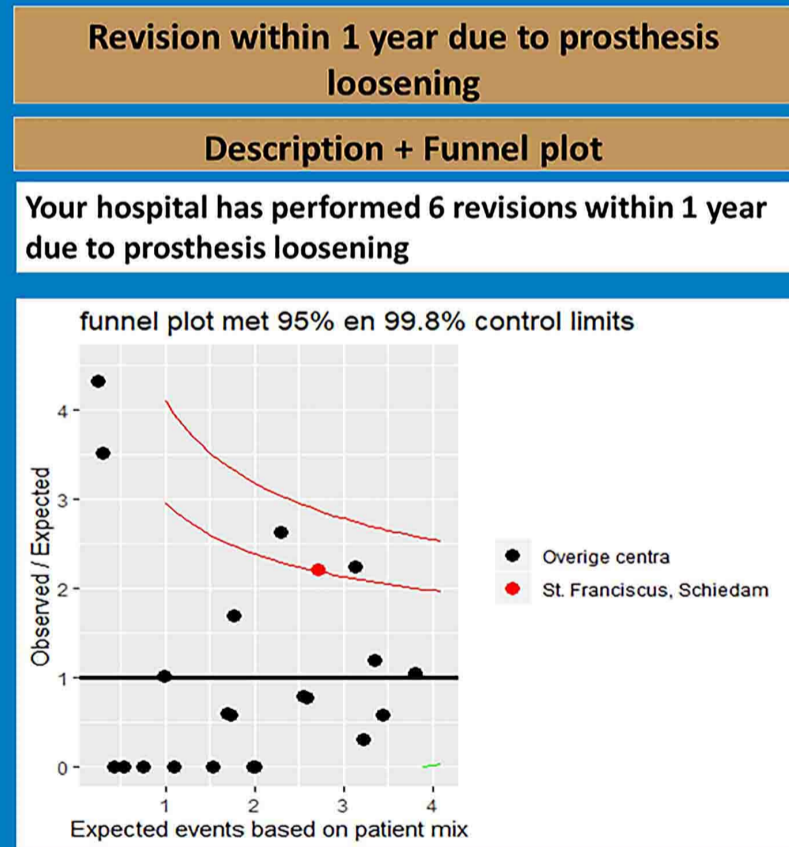
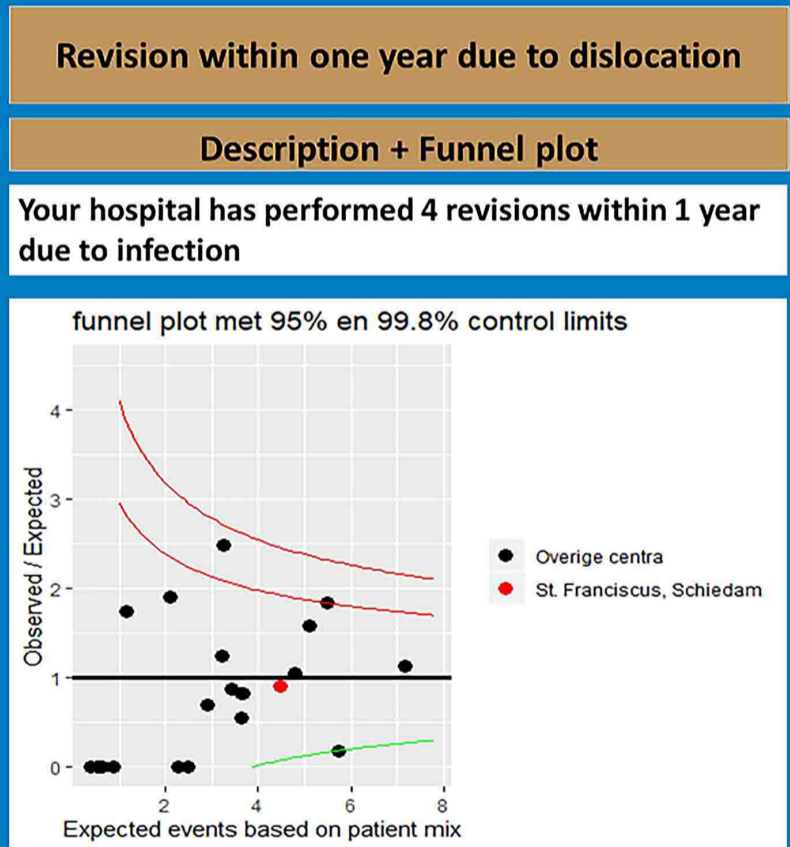
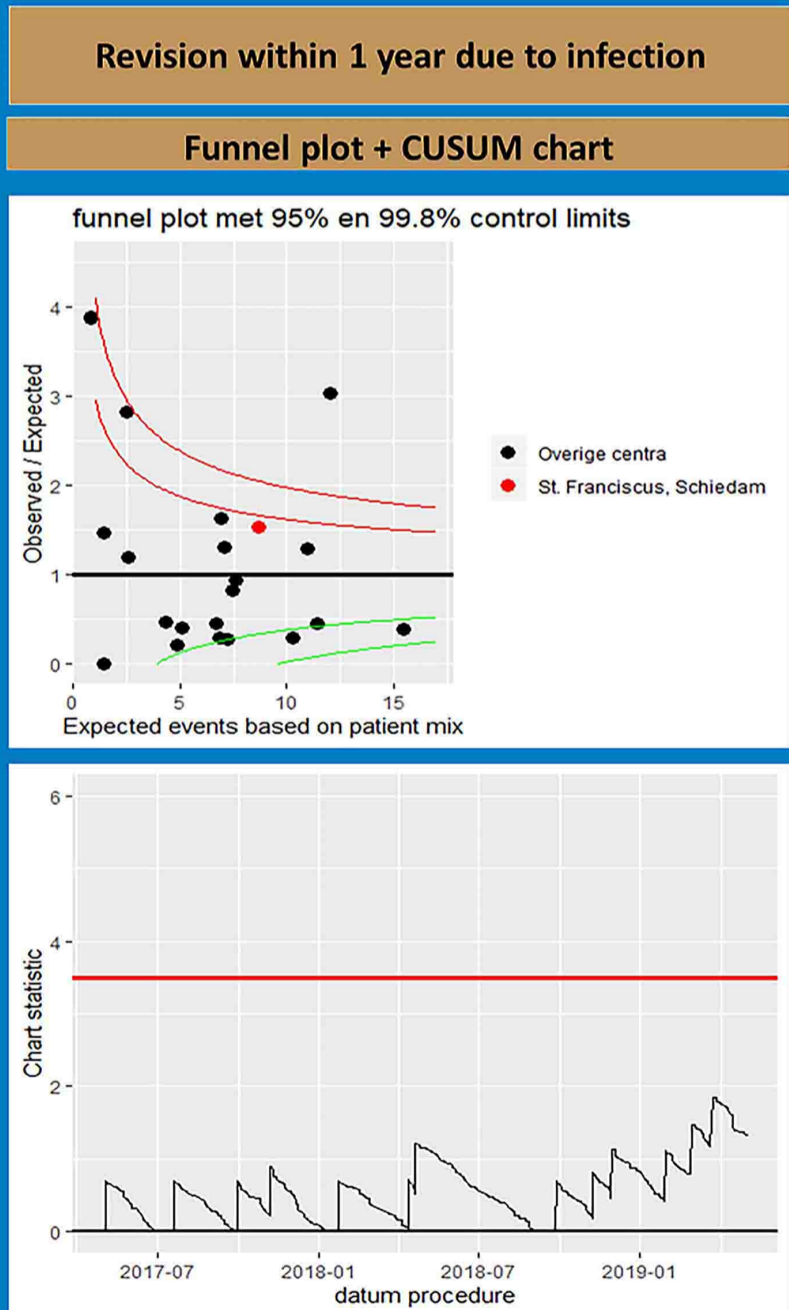


This graph shows the expected number of revisions per center on the x-axis. The centers with larger numbers of patients are more to the right than the smaller centers. The y axis shows the observed number of revisions divided by the expected number based on case-mix. **Your hospital has significantly more revisions within 1 year than the average of the [redacted] study group.**



Revision within one year adjusted for case-mix due to infection, dislocation and prosthesis loosening. A higher number for one of these outcomes indicates targeted initiatives for quality improvement.

blinded



blinded

