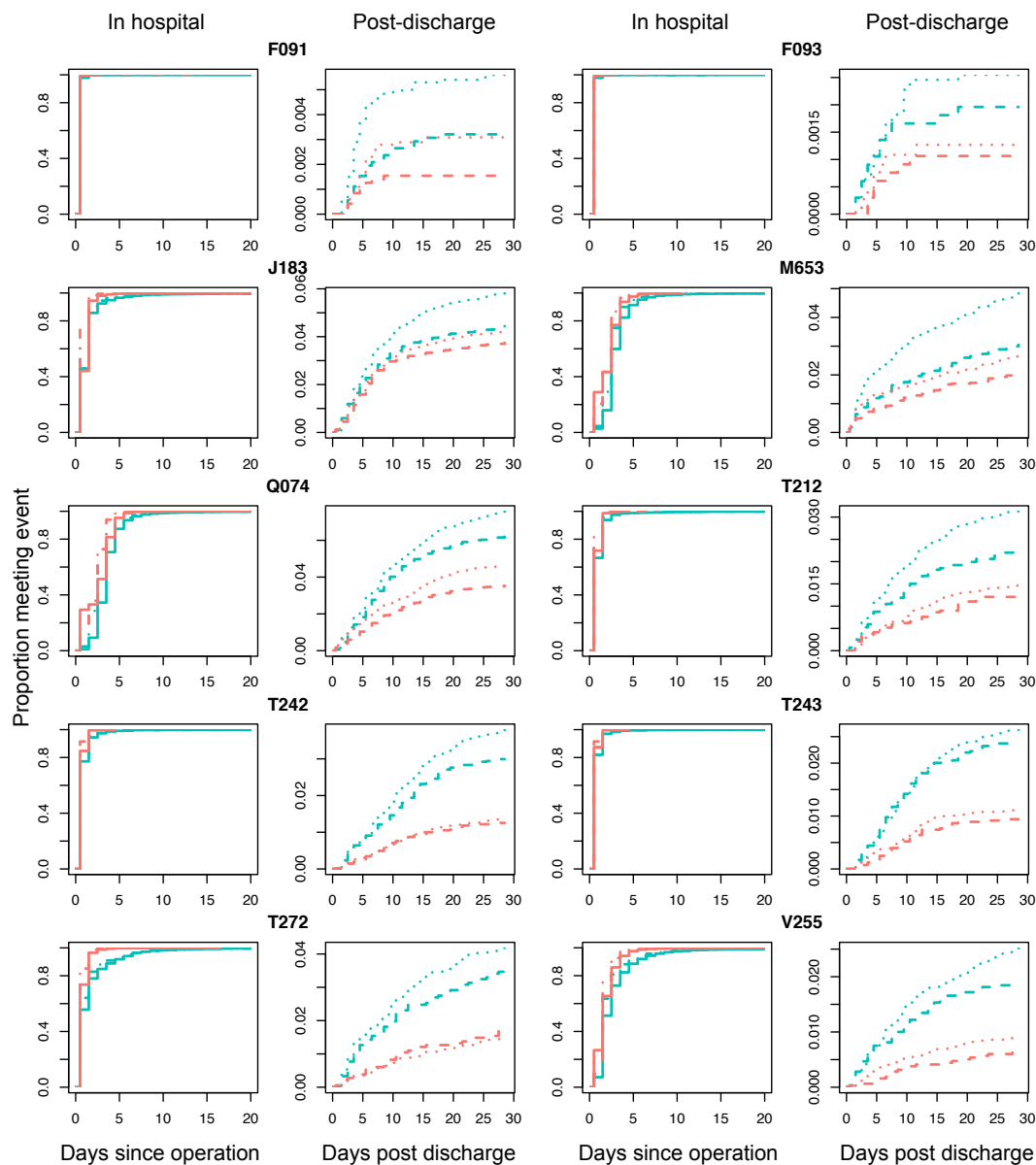


Supplementary Figure 5: Cumulative incidence of discharge and readmission split by provider type and stratified by the time window in which the operation took place. The early and late time periods correspond to pre- and post- 1st Jan 2014 respectively. Cumulative incidence of discharge is shown in the first and third columns while readmission is shown in the second and fourth columns.



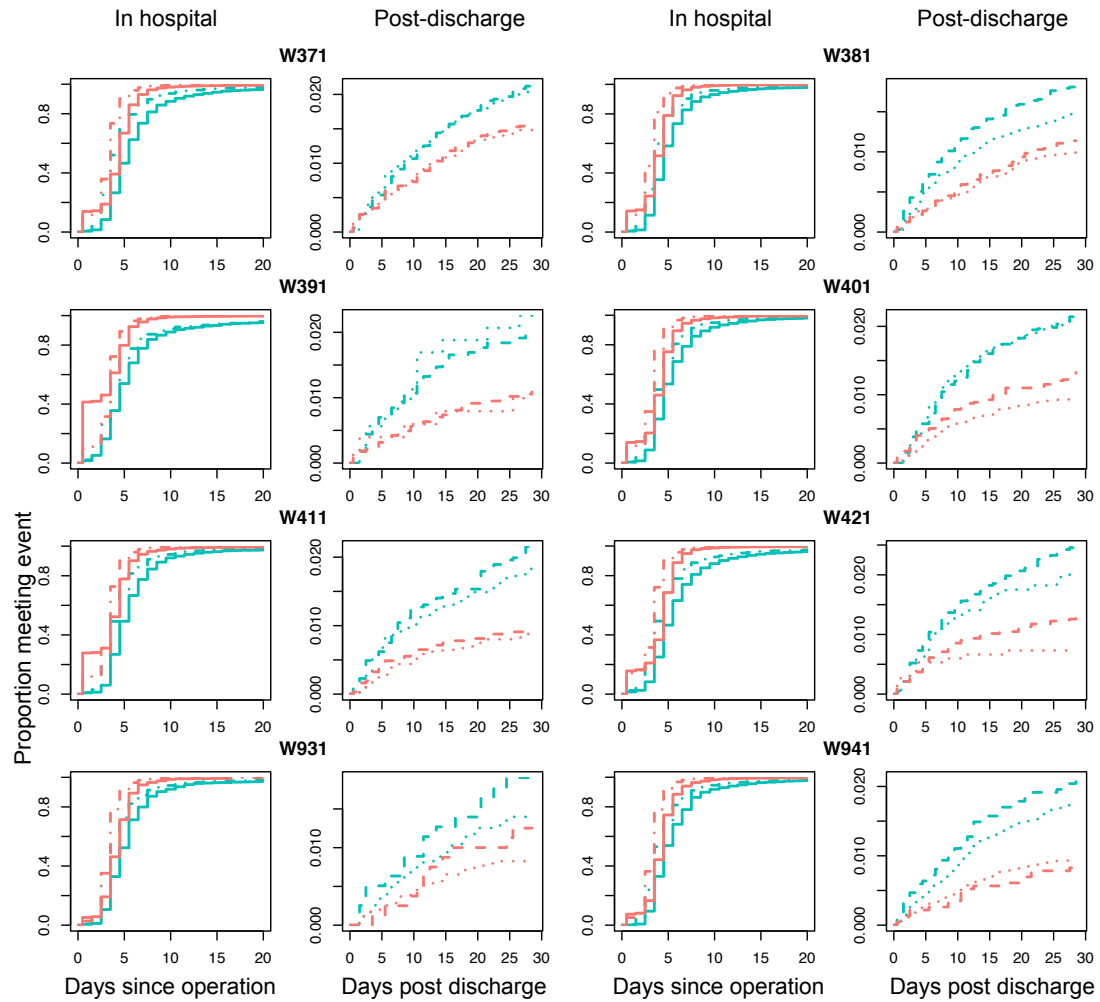
Key: In hospital event (discharge)

— NHS:early - - - NHS:late
 — ISHP:early - - - ISHP:late

Key: Post-discharge event (readmission)

- - - NHS:early ···· NHS:late
 - - - ISHP:early ···· ISHP:late

Supplementary Figure 5 (cont.)



Key: In hospital event (discharge)

— NHS:early - - - NHS:late
 — ISHP:early - - - ISHP:late

Key: Post-discharge event (readmission)

- - - NHS:early ···· NHS:late
 - - - ISHP:early ···· ISHP:late