

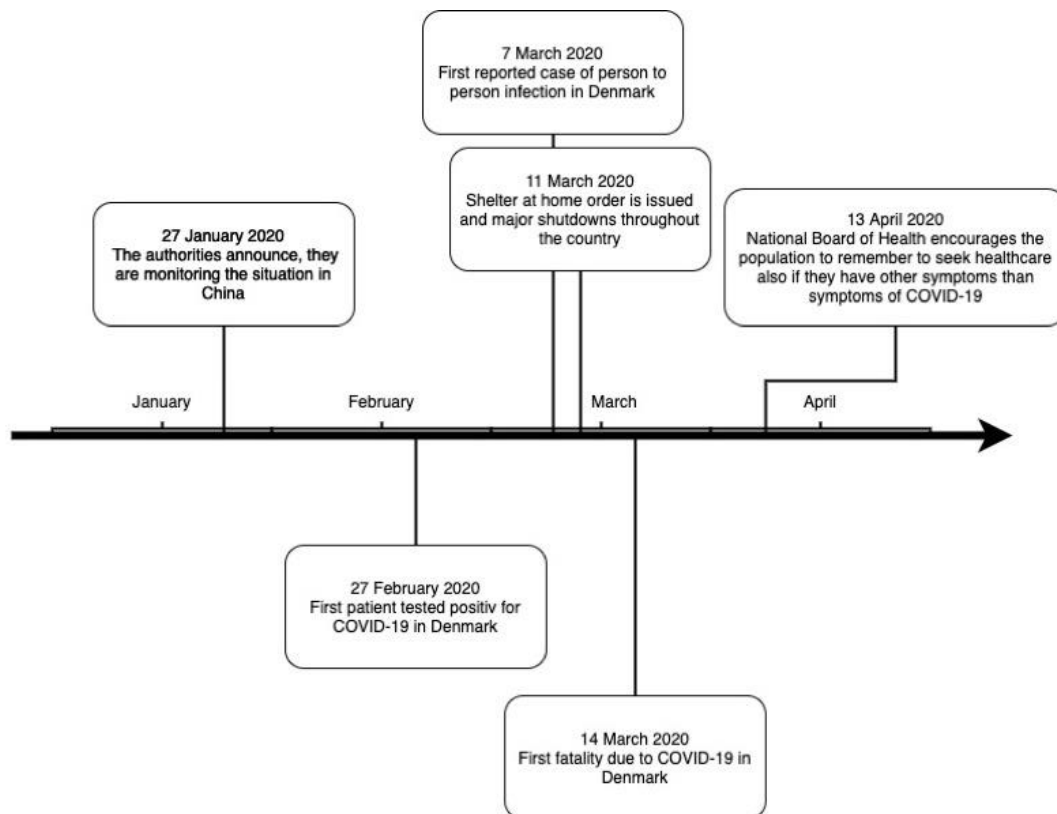
## Supplementary Material

### Contents

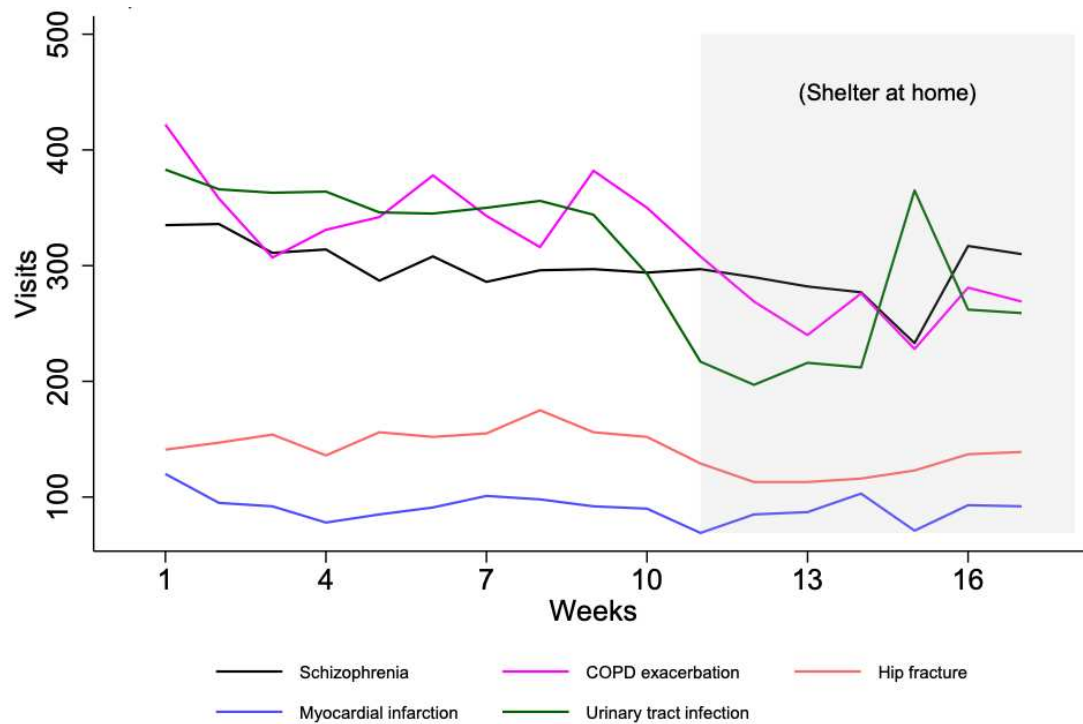
Supplementary table 1 .....	2
Supplementary figure 1 .....	3
Supplementary figure 2 .....	4
Supplementary figure 3 .....	5
References .....	6

**Supplementary table 1** – A list of diagnoses (and relevant ICD-10 codes) we expected would be stable over time regardless of pandemics. \*indicates inclusion of all sub-diagnoses.

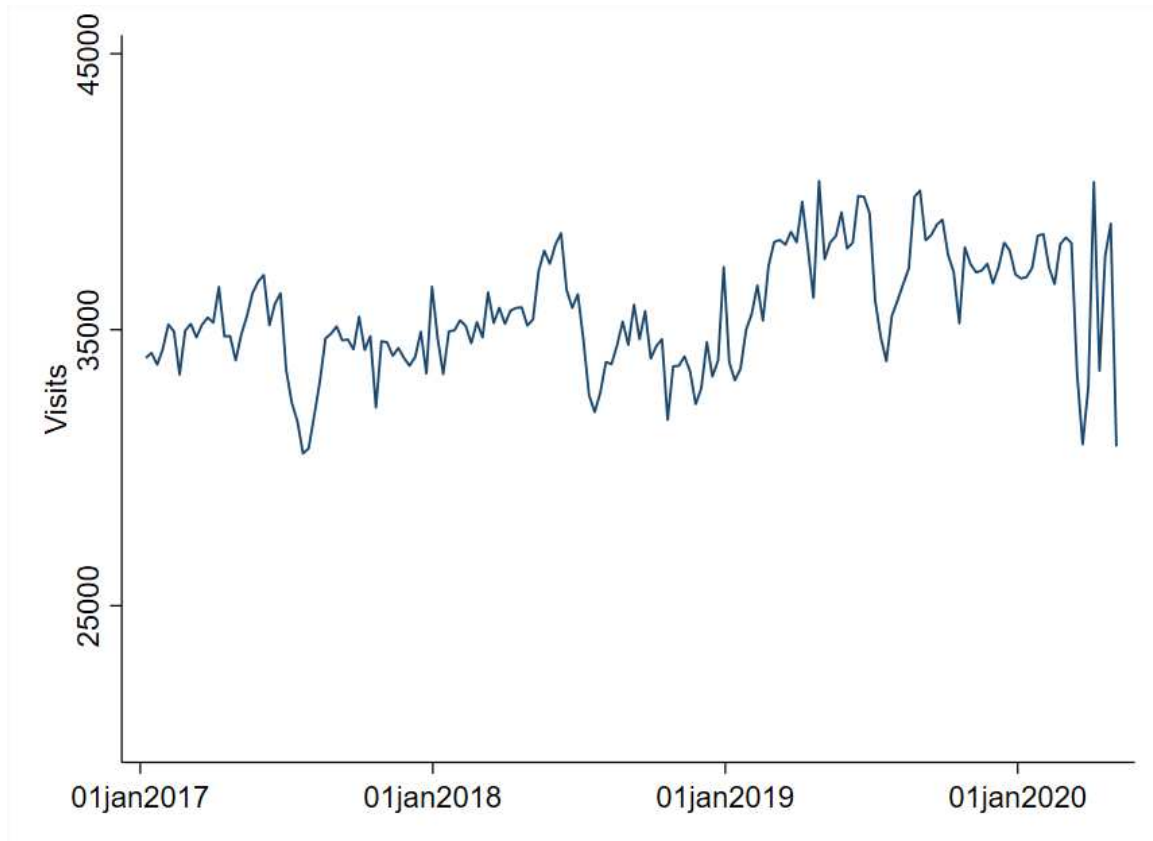
<b>Diagnosis</b>	<b>ICD-10 codes</b>
Myocardial infarction	I21*
ST-elevation myocardial infarction	I210 I210B I211 I211A I211B I213 I213A I213B I213C
Pulmonary embolism	I260 I260A I269 I269A
Subarachnoid hemorrhage	I60*
Stroke	I61* I62* I63* I64*
Deep venous thrombosis	I802 I802A I802B I803C I803F
Pneumonia	J12* J13* J14* J15* J16* J17* J18*
Exacerbation of chronic obstructive pulmonary disease	J440 J441 J449
Urinary tract infection	N300 N309
Renal colic	N20* N21* N22* N23*
Appendicitis	K35* K36* K37*
Diverticulitis	K57 K570* K571* K572* DK573*
Gall stone attack	K800*
Cholecystitis	K810*
Asthma	J459 J46 J469
Diabetic ketoacidosis	E101 E111 E131 E141
Bacterial meningitis	A390 G039 G00 G000 G001 G002 G003 G008 G008A G008B G009 G009A G01 G019 G021 A203
Febrile convulsions	R560
Battered child	T741A
Retinal detachment	H33*
Upper gastrointestinal bleeding	K250 K252 K254 K256 K260 K262 K264 K266 K270 K272 K274 K2767
Acute ischemic bowel	K550*
Aortic dissection	I710 I710A I710B I711 I713 I715 I718
Bowel perforation	K251 K251A K251B K251C K251D K251E K252 K252A K252B K252C K252D K252E K255* K261 K261A K262 K262A K265 K265A K265B K265C K271 K272 K275 K276 K281 K282 K284 K285 K286 K570 K570B K570C K572 K572B K572C K574 K574A K578 K631 K631A K822 K832
Endocarditis	I33 I330 I339 I38 I389 I398
Septic arthritis	M00*
Hip fracture	S720 S721 S721A S721B S722
Schizophrenia	F20*
Schizoaffective psychosis	F25*

**Supplementary figure 1** - Timeline of the Danish response to the SARS-CoV2 pandemic.

**Supplementary figure 2** – Number of unplanned hospital visits in 2020 for the five most stable diagnoses from 2017-2019 expected during a pandemic.



**Supplementary figure 3** - A line plot of the number of non-psychiatric and psychiatric unplanned hospital visits from 1 January 2017 till 26 April 2020.



## References

1. Statistics Denmark. DIAG99 [Internet]. [Available from: <https://www.dst.dk/da/Statistik/dokumentation/Times/sygehusbenyttelse/diag99#> accessed May 15 2020.