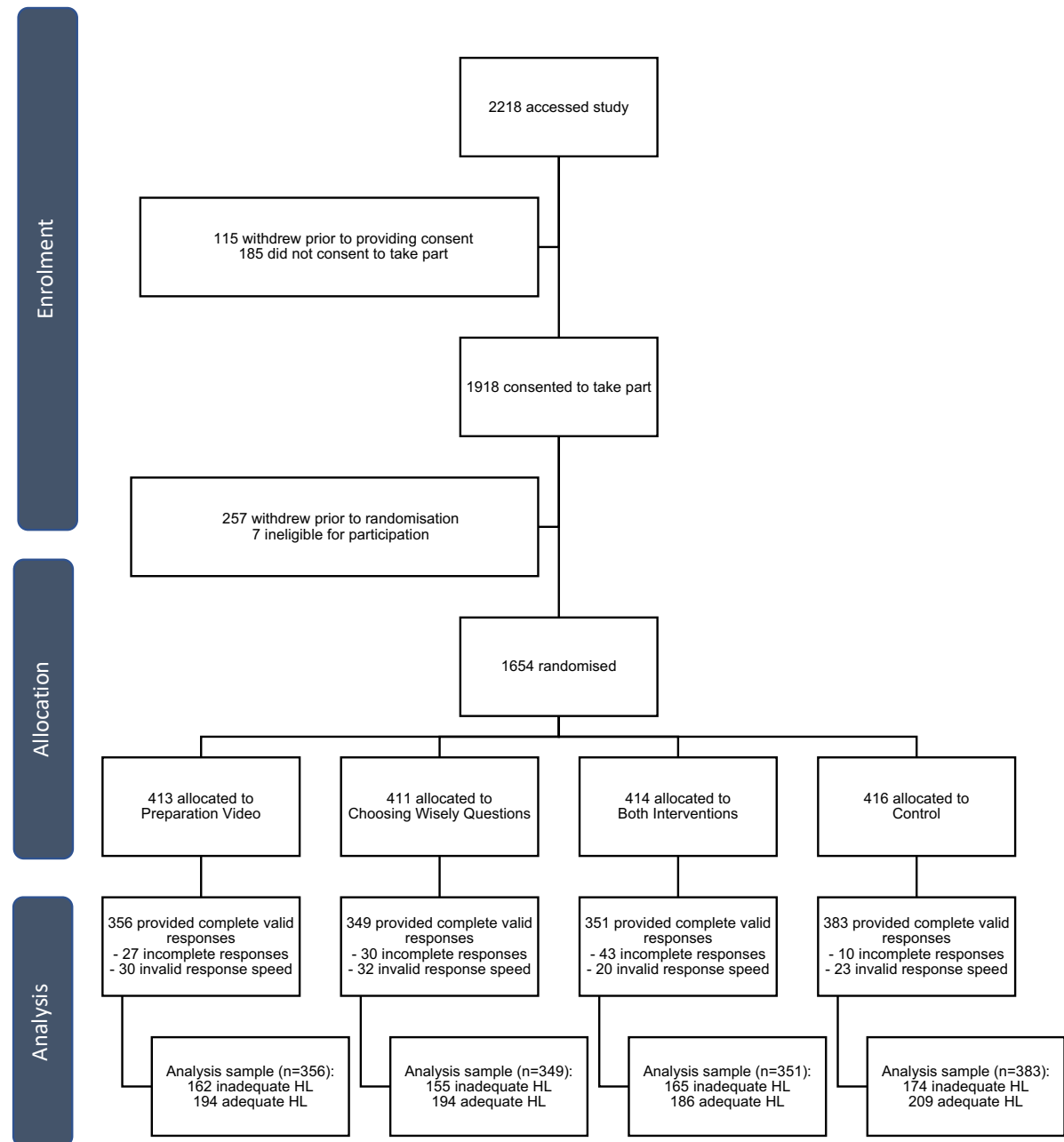


Supplementary Figure 1



Supplementary Figure 1. Flow of participants through trial. HL = health literacy

Supplementary Table 1. Acceptability of interventions and proactive intervention use, stratified by study arm (1-3 only) and health literacy.

	Study arm				
	Video (N=356)	Questions (N=349)	Both interventions (N=351)		
	n (%)	n (%)	Video n (%)	Questions n (%)	Both n (%)
Limited health literacy					
Would recommend	135 (83.3)	134 (86.4)	134 (81.2)	138 (83.6)	134 (81.2)
Would use again	96 (59.3)	136 (87.7)	107 (64.8)	129 (78.2)	121 (73.3)
Proactively accessed the intervention –	7 (4.3)	7 (4.5)	4 (2.4)	4 (2.4)	2 (1.2)
Adequate health literacy					
Would recommend	150 (77.3)	170 (87.6)	150 (80.6)	153 (82.3)	156 (83.9)
Would use again	81 (41.7)	168 (86.6)	99 (53.2)	142 (76.3)	119 (64.0)
Proactively accessed the intervention –	5 (2.6)	23 (11.9)	8(4.3)	11 (5.9)	4 (2.2)