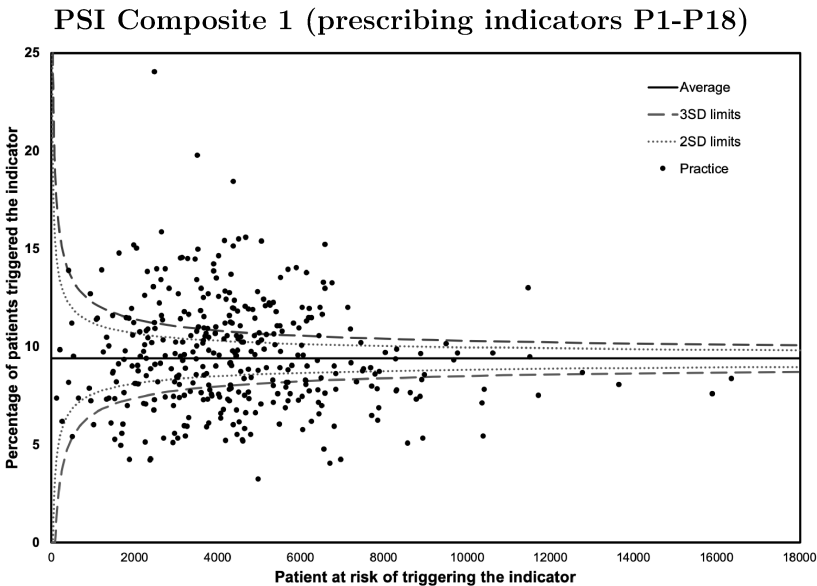


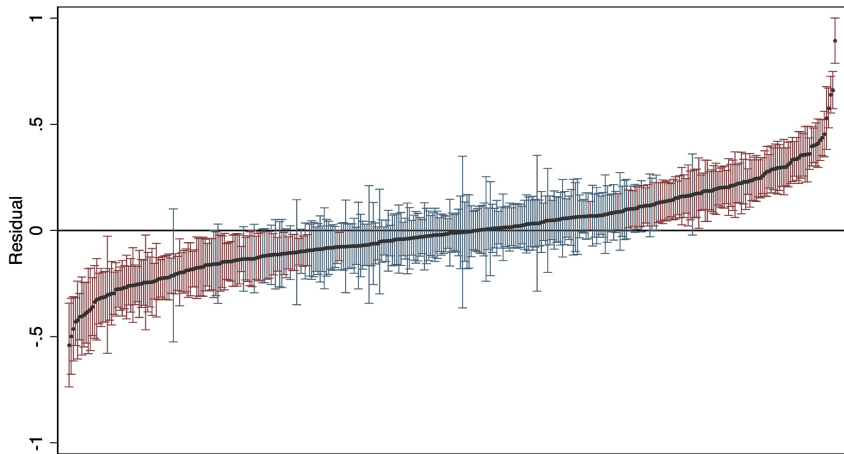
**Evaluating the safety of mental health related prescribing in UK primary care: a cross-sectional study using the Clinical Practice Research Datalink (CPRD)**

**Supplementary file 2**

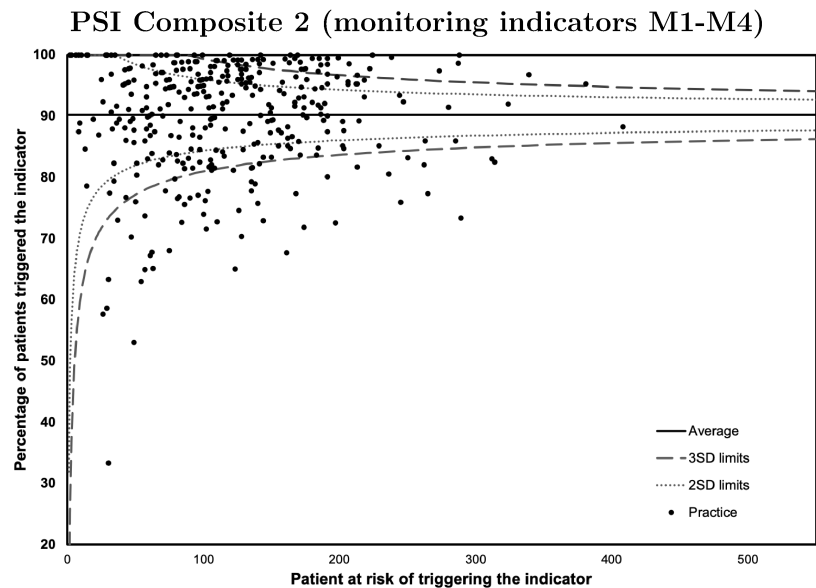
The variation between practices for each prescribing safety indicator with adequate reliability before and after adjusting for patient characteristics



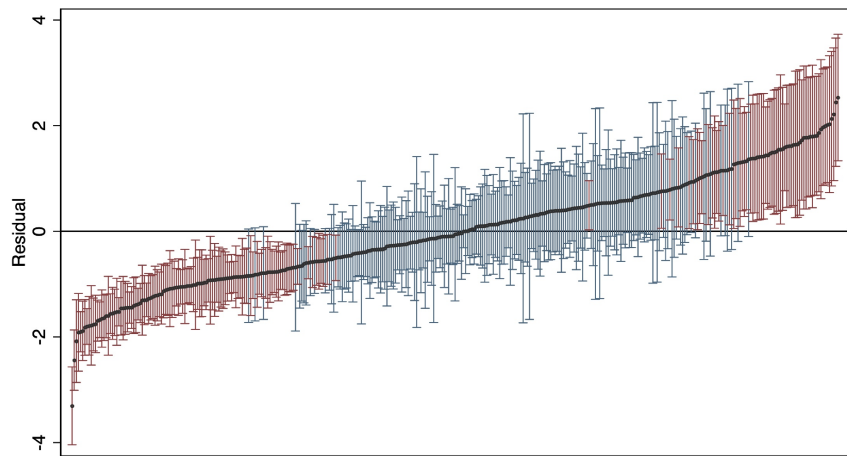
(a) Variations between practices in the proportion of patients triggering the indicator.



(b) Variation between practices, ranked, based on estimated practice-level residuals with 95% CIs after adjusting for patients characteristics. The red colour represent practices that are significantly different than the average (their CIs do not include zero). The blue colour represent practices that are not different than the average (their CIs include zero).

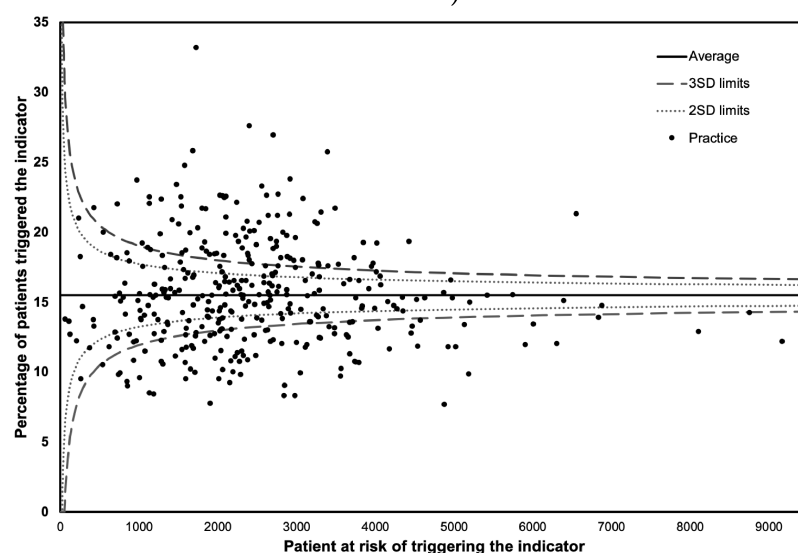


(a) Variations between practices in the proportion of patients triggering the indicator.

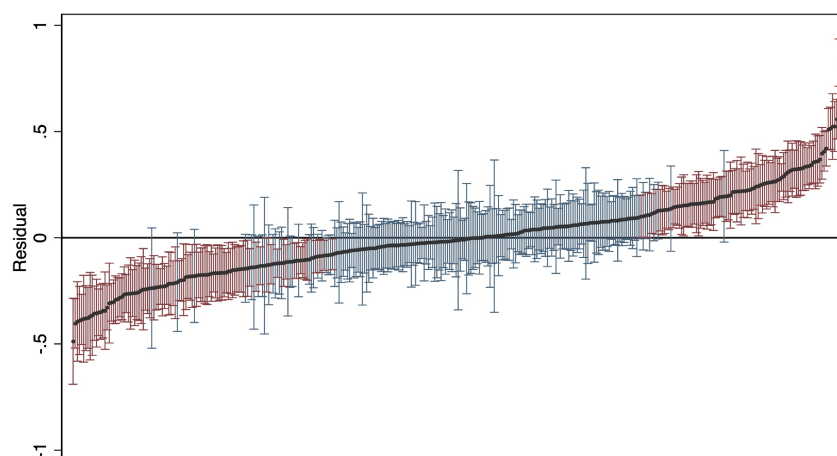


(b) Variation between practices, ranked, based on estimated practice-level residuals with 95% CIs after adjusting for patients characteristics. The red colour represent practices that are significantly different than the average (their CIs do not include zero). The blue colour represent practices that are not different than the average (their CIs include zero).

### PSI Composite 3 (prescribing indicators excluding P11 and P13, specific for elderly or female)



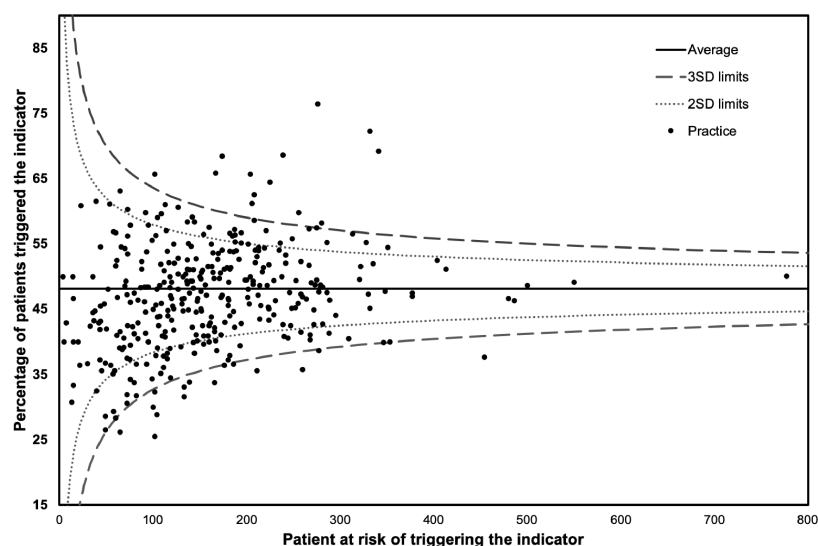
(a) Variations between practices in the proportion of patients triggering the indicator.



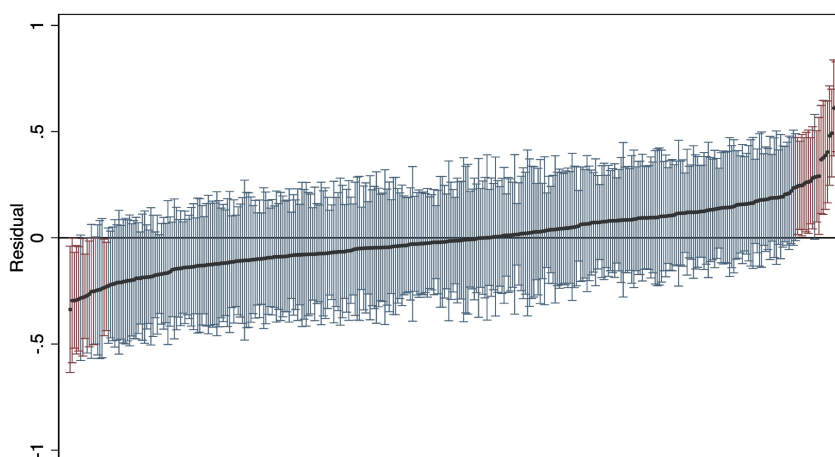
(b) Variation between practices, ranked, based on estimated practice-level residuals with 95% CIs after adjusting for patients characteristics. The red colour represent practices that are significantly different than the average (their CIs do not include zero). The blue colour represent practices that are not different than the average (their CIs include zero).



### P1: Prescribing antipsychotic with a QT-prolonging drug

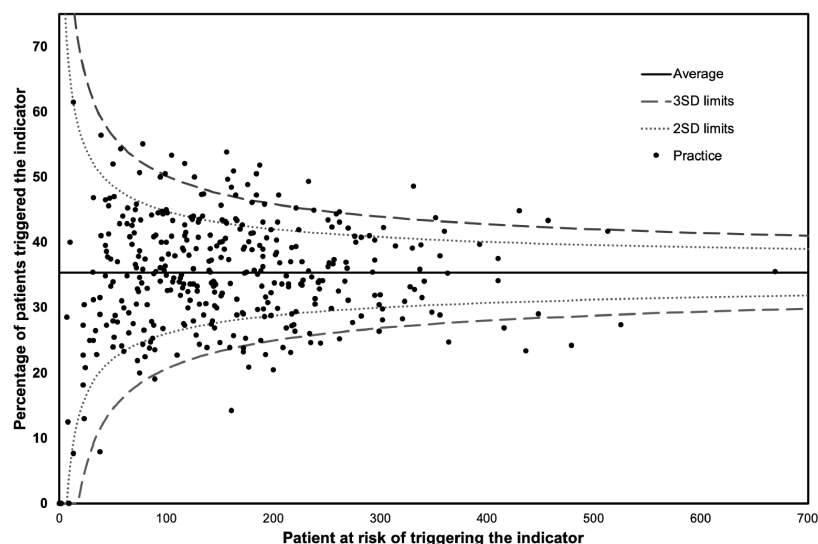


(a) Variations between practices in the proportion of patients triggering the indicator.

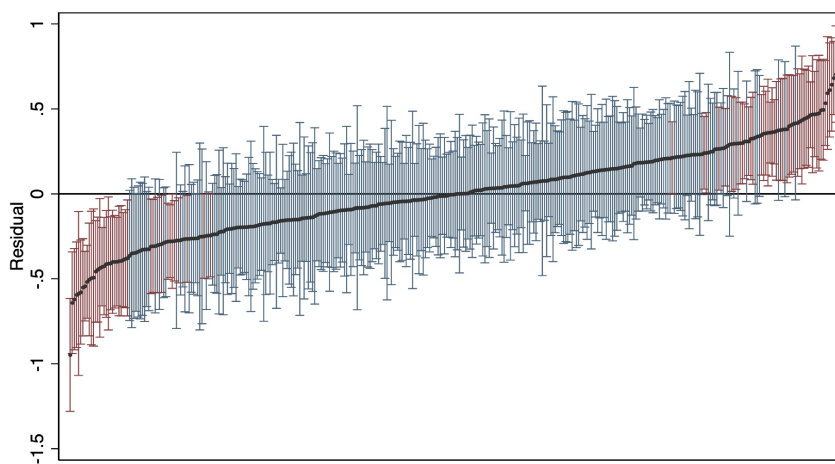


(b) Variation between practices, ranked, based on estimated practice-level residuals with 95% CIs after adjusting for patients characteristics. The red colour represent practices that are significantly different than the average (their CIs do not include zero). The blue colour represent practices that are not different than the average (their CIs include zero).

**P5: Selective serotonin reuptake inhibitor (SSRI) or serotonin and norepinephrine reuptake inhibitor (SNRI) prescribed with an NSAID or antiplatelet agent to a patient without gastrointestinal protection**

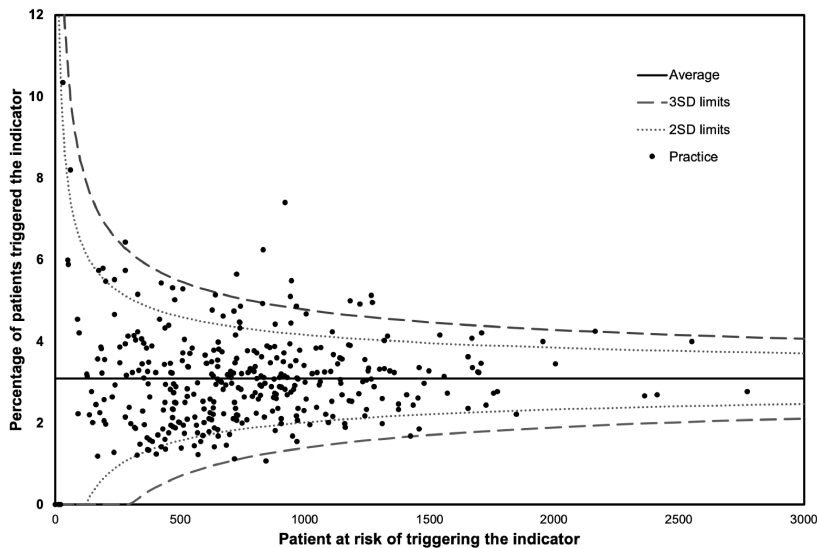


(a) Variations between practices in the proportion of patients triggering the indicator.

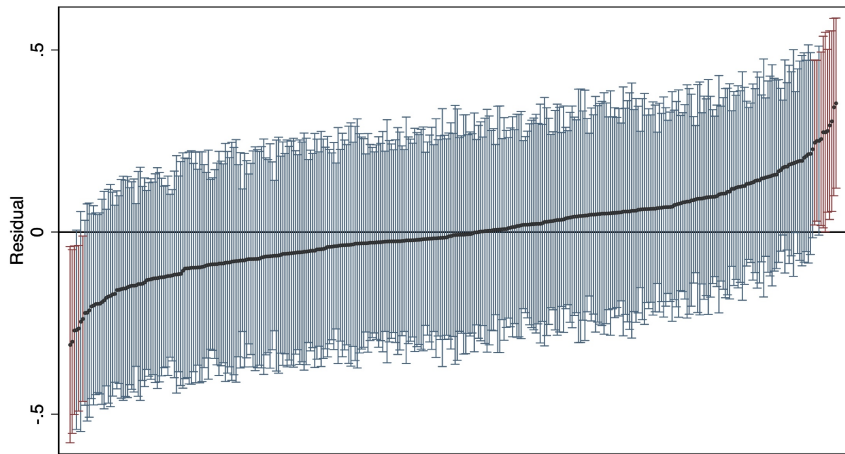


(b) Variation between practices, ranked, based on estimated practice-level residuals with 95% CIs after adjusting for patients characteristics. The red colour represent practices that are significantly different than the average (their CIs do not include zero). The blue colour represent practices that are not different than the average (their CIs include zero).

P6: SSRI or SNRI prescribed with a direct oral anticoagulant (DOAC) or warfarin

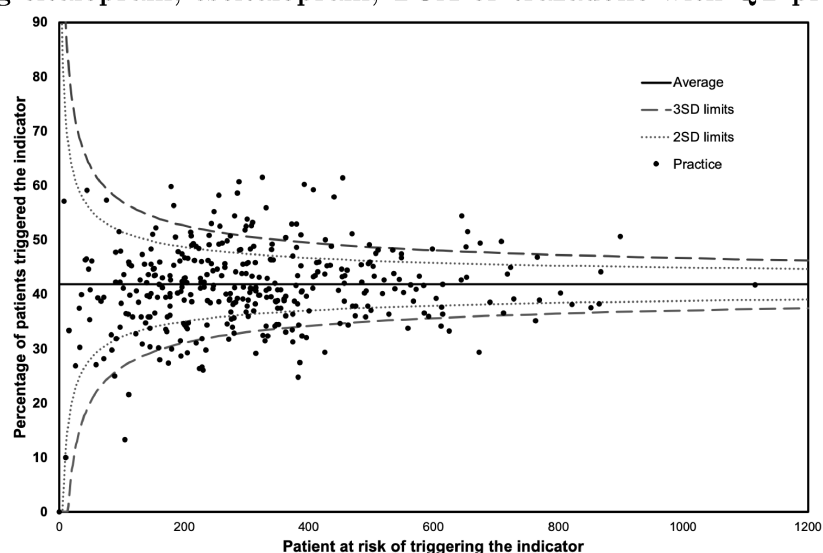


(a) Variations between practices in the proportion of patients triggering the indicator.

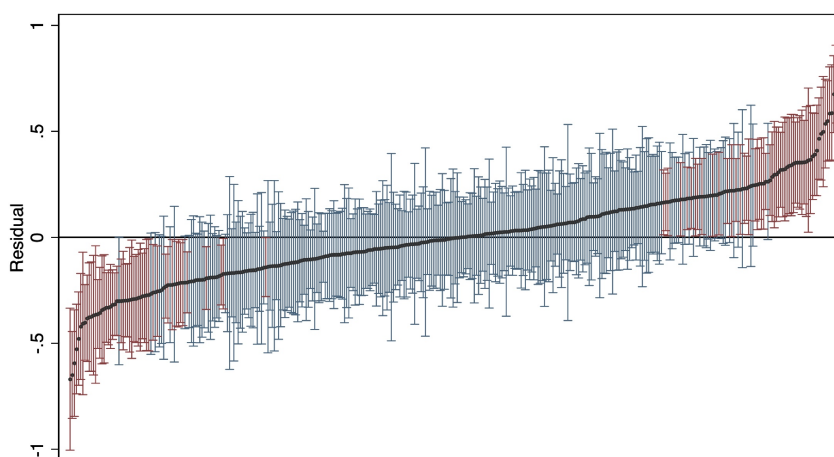


(b) Variation between practices, ranked, based on estimated practice-level residuals with 95% CIs after adjusting for patients characteristics. The red colour represent practices that are significantly different than the average (their CIs do not include zero). The blue colour represent practices that are not different than the average (their CIs include zero).

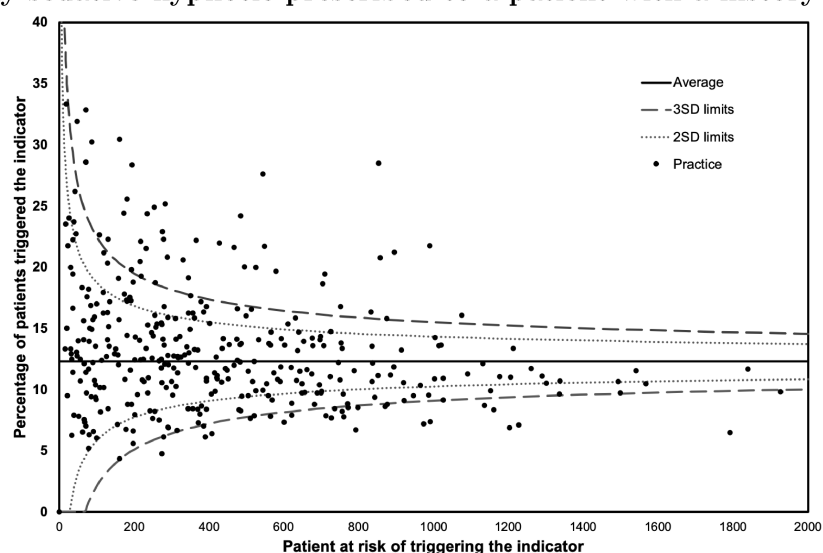
# P7: Prescribing citalopram, escitalopram, TCA or trazadone with QT-prolonging drugs



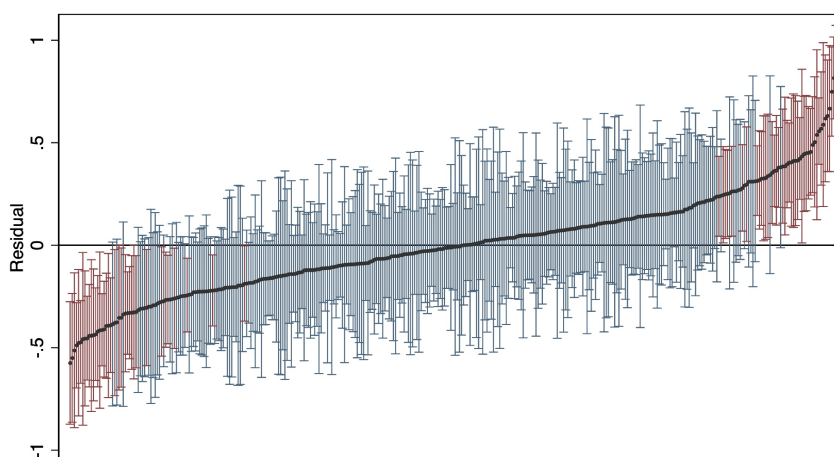
(a) Variations between practices in the proportion of patients triggering the indicator.



(b) Variation between practices, ranked, based on estimated practice-level residuals with 95% CIs after adjusting for patients characteristics. The red colour represent practices that are significantly different than the average (their CIs do not include zero). The blue colour represent practices that are not different than the average (their CIs include zero).

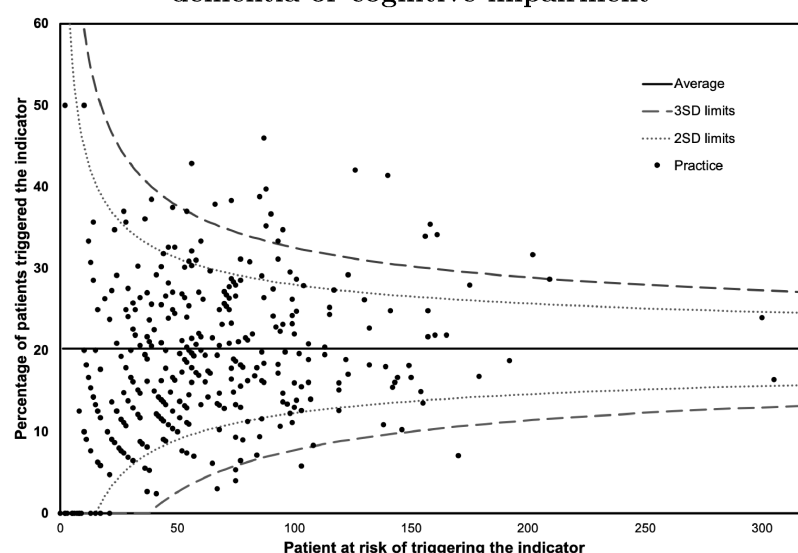
**P9: Any sedative-hypnotic prescribed to a patient with a history of falls**

(a) Variations between practices in the proportion of patients triggering the indicator.

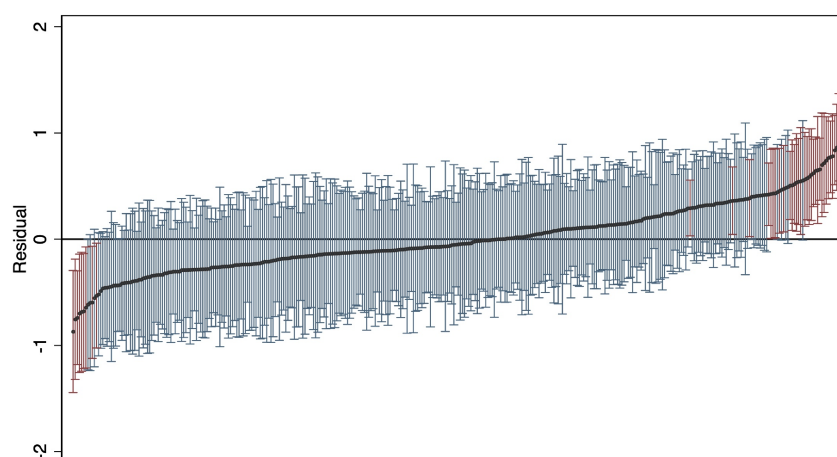


(b) Variation between practices, ranked, based on estimated practice-level residuals with 95% CIs after adjusting for patients characteristics. The red colour represent practices that are significantly different than the average (their CIs do not include zero). The blue colour represent practices that are not different than the average (their CIs include zero).

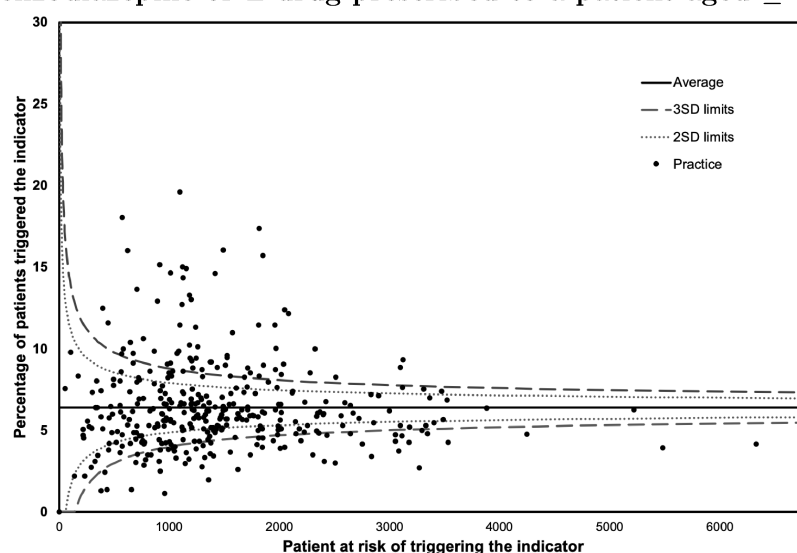
**P10: Benzodiazepine, Z-drug or sedating antihistamine prescribed to a patient with dementia or cognitive impairment**



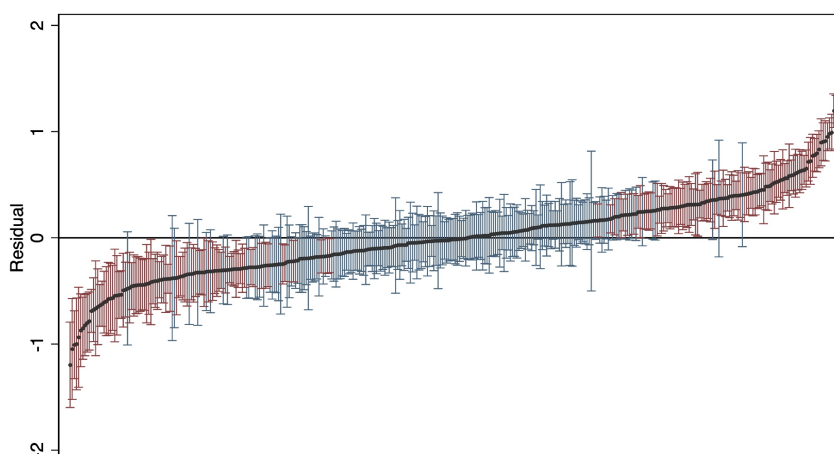
(a) Variations between practices in the proportion of patients triggering the indicator.



(b) Variation between practices, ranked, based on estimated practice-level residuals with 95% CIs after adjusting for patients characteristics. The red colour represent practices that are significantly different than the average (their CIs do not include zero). The blue colour represent practices that are not different than the average (their CIs include zero).

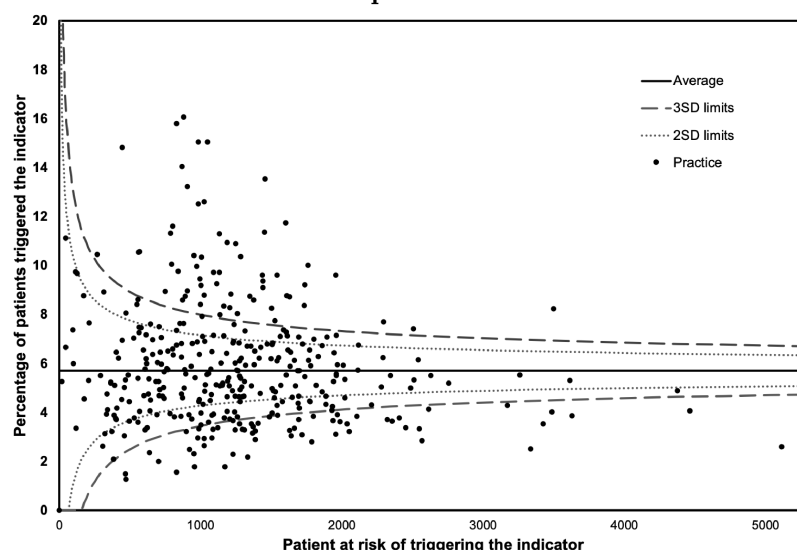
P11: Benzodiazepine or Z-drug prescribed to a patient aged  $\geq 65$  years

(a) Variations between practices in the proportion of patients triggering the indicator.

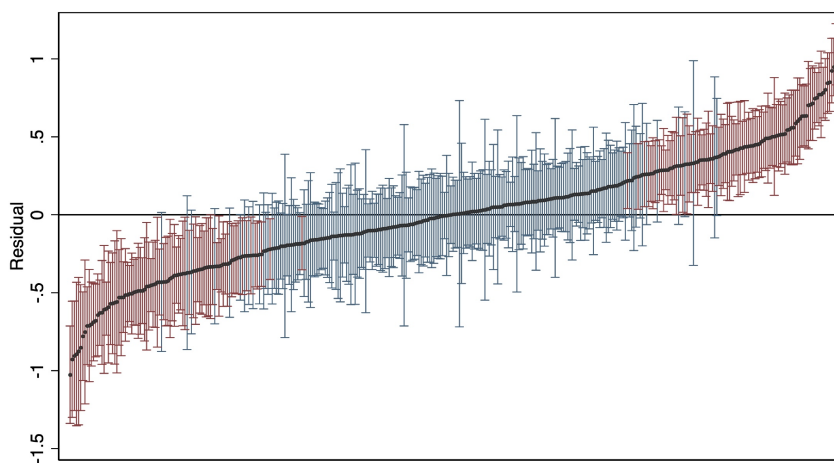


(b) Variation between practices, ranked, based on estimated practice-level residuals with 95% CIs after adjusting for patients characteristics. The red colour represent practices that are significantly different than the average (their CIs do not include zero). The blue colour represent practices that are not different than the average (their CIs include zero).

## P12: Benzodiazepine or Z-drug prescribed to a patient with asthma, COPD or sleep apnoea



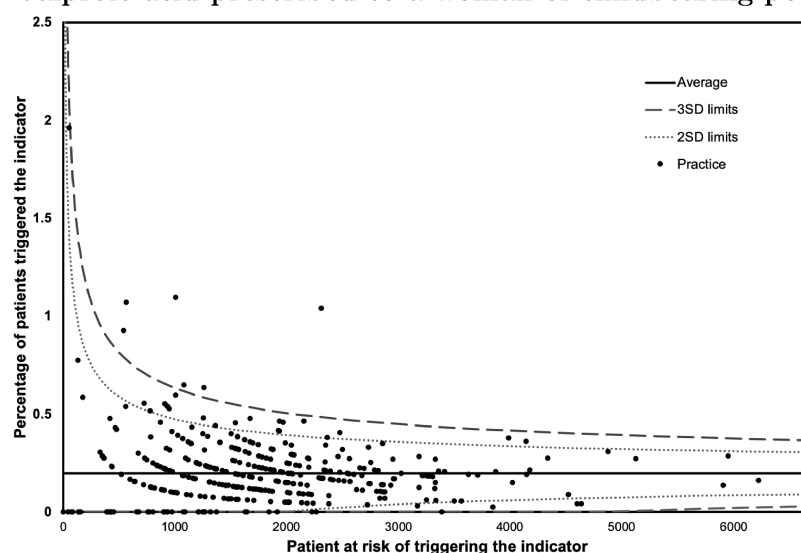
(a) Variations between practices in the proportion of patients triggering the indicator.



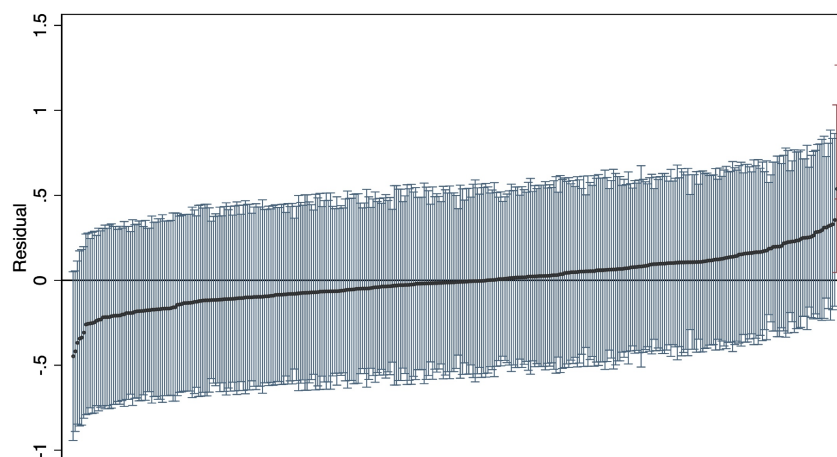
(b) Variation between practices, ranked, based on estimated practice-level residuals with 95% CIs after adjusting for patients characteristics. The red colour represent practices that are significantly different than the average (their CIs do not include zero). The blue colour represent practices that are not different than the average (their CIs include zero).



### P13: Valproic acid prescribed to a woman of childbearing potential

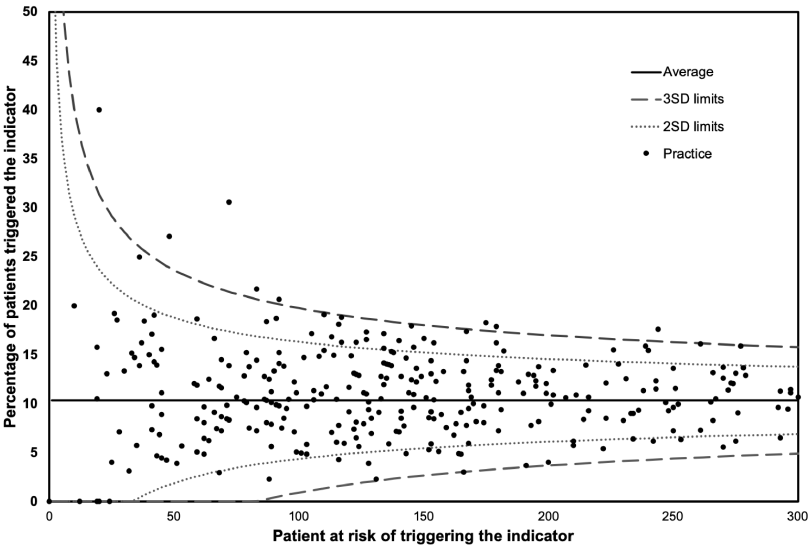


(a) Variations between practices in the proportion of patients triggering the indicator.

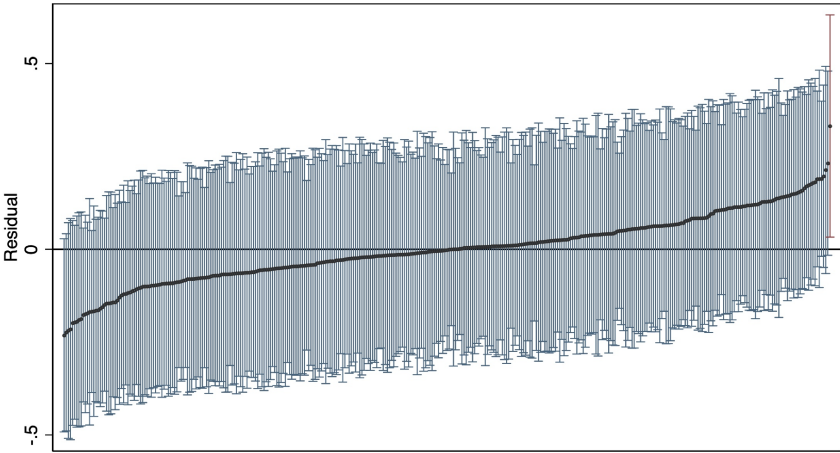


(b) Variation between practices, ranked, based on estimated practice-level residuals with 95% CIs after adjusting for patients characteristics. The red colour represent practices that are significantly different than the average (their CIs do not include zero). The blue colour represent practices that are not different than the average (their CIs include zero).

P17: Mental health related medication with medium/high anticholinergic activity prescribed to a patient with a history of urinary retention or benign prostatic hyperplasia

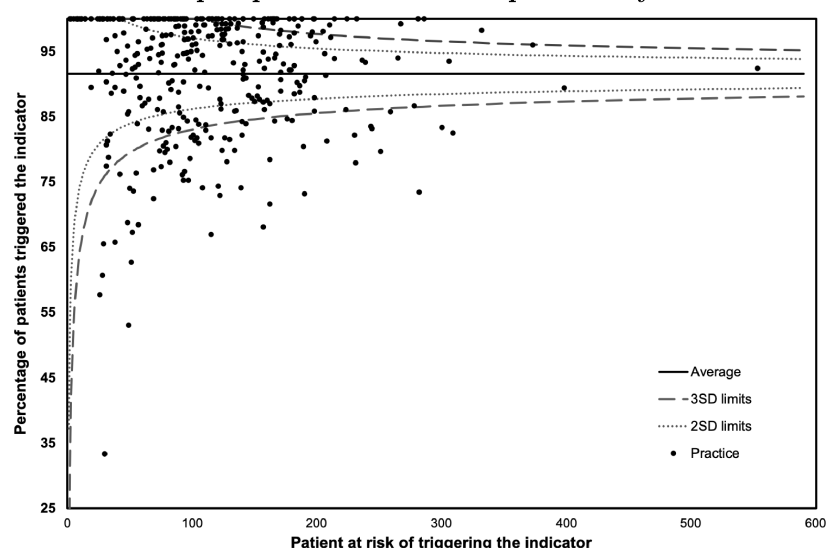


(a) Variations between practices in the proportion of patients triggering the indicator.

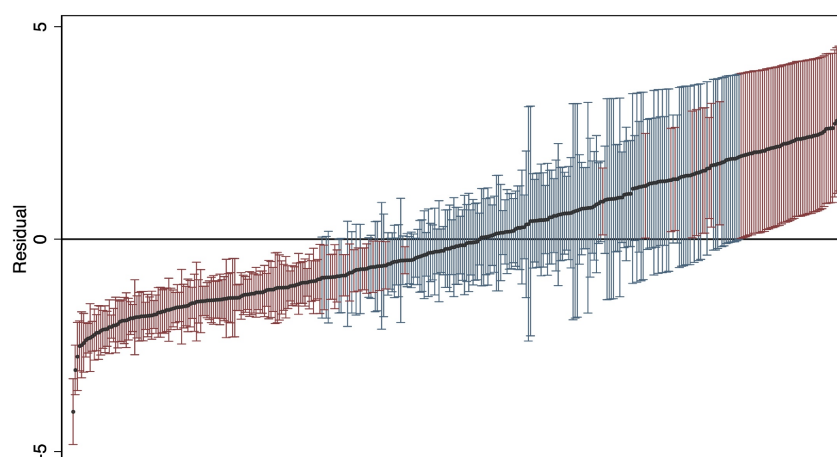


(b) Variation between practices, ranked, based on estimated practice-level residuals with 95% CIs after adjusting for patients characteristics. The red colour represent practices that are significantly different than the average (their CIs do not include zero). The blue colour represent practices that are not different than the average (their CIs include zero).

**M1: Antipsychotic prescribed for at least 12 months without monitoring glucose, weight, or lipid profile within the previous year**



(a) Variations between practices in the proportion of patients triggering the indicator.



(b) Variation between practices, ranked, based on estimated practice-level residuals with 95% CIs after adjusting for patients characteristics. The red colour represent practices that are significantly different than the average (their CIs do not include zero). The blue colour represent practices that are not different than the average (their CIs include zero).